

ESD Transport solutions

Innovative, individual, ESD-compliant



ESD Transport Trolleys

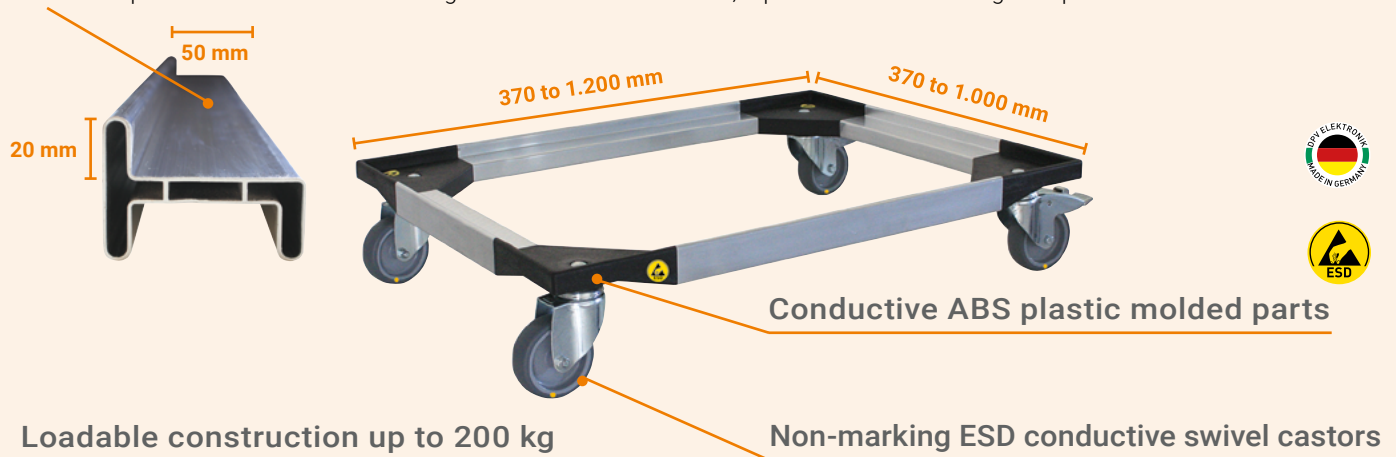
The body scores with a robust frame made of aluminum cavity profiles and black, conductive ABS plastic molded parts, manufactured in Germany. The Maxi FLEX is stopped by two ESD swivel castors with locks.

Type 700 Maxi FLEX



Aluminum cavity profile supporting surface 50 mm/frame height 20 mm

The frame profile encloses the external edge of the container for a safe, slip-resistant stand during transport.



Loadable construction up to 200 kg



Payload/surface load: max. 200 kg (with evenly distributed load)

Non-marking ESD conductive swivel castors

- 2x with locks

Type 700 Maxi FLEX standard

The innovative Maxi FLEX transport trolley of the EPAmove[®] series by DPV is lightweight and at the same time very resilient. With its maximum flexibility due to different sizes, it remains safe and stable when transporting e.g. Euro containers, magazines and pallets.

- Robust frame made of heat-hardened aluminum cavity profile
- Black conductive ABS plastic corner parts
- Loadable up to 200 kg, even distribution of the load
- Low dead weight (from approx. 4 kg)
- 4 non-marking ESD swivel castors (2x with lock)
- Supporting surface 50 mm
- Frame height 20 mm
- Suitable for various standard containers from stock:
 - 600 x 400 mm/700 x 400 mm/800 x 400 mm
 - 800 x 600 mm
 - 1200 x 800 mm



dpvlink 17882

For more information, see dpv-elektronik.com. Simply enter the number of the green dpvlink in the search box.

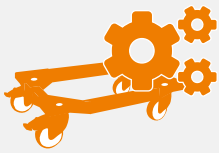


Individual Solutions

Adapted to your requirements – individual dimensions are possible for the Maxi Flex transport trolley of the EPAmove[®] series. With a successful combination of form and function, the EPAmove[®] transport trolley type 700 Maxi FLEX convinces.

Thanks to the innovative modular system, we can offer you sizes with internal support dimensions from 370 x 370 mm to 1.200 x 1.000 mm, suitable for your containers, magazines and pallets.

[to the configurator for transport trolleys](#)



Scan the QR code and use our online configurator to create your desired product conveniently.



ESD Transport Trolleys

Type 100 + Type 101

The transport trolley type 100 is available in several variants. A distinction is made between the standard castors, which can cause contact discoloration of the floor, and the non-marking castors, which are equipped with a thermoplastic, non-marking rubber tread.

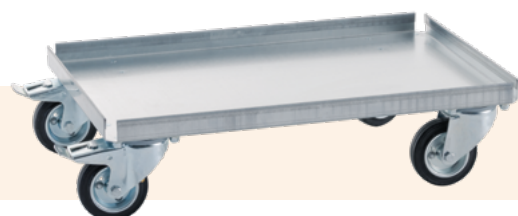
Both castor types are optionally available with a lock. Of the four swivel castors available, two are equipped with a lock.

- Suitable for Euro, transport containers and PCB magazines
- Galvanized metal construction
- Special sizes on request
- 4 swivel castors, solid rubber, black or grey (non-marking), conductive, Ø 10 cm, smooth rolling, load capacity 150 – 200 kg
- Trolley non-marking/ELS version: wheel body made of polypropylene, equipped with thermoplastic, non-marking rubber tread, electrically conductive

Type 100
without lock



Type 101
with lock



dpvlink 1906 (Type 100) | **dpvlink 18028** (Type 101)

All sizes can be found at dpv-elektronik.com. Simply enter the number of the green **dpvlink** in the search box.



ESD Transport Trolleys

Type 120 + type 121

The type 120 transport trolley is available in several versions, differentiated into standard castors and non-marking castors, which are fitted with a thermoplastic, non-marking rubber tread. Both castor types are also available with locks. The transport trolley type 121 has two swivel castors and two fixed castors, and the two swivel castors are equipped with locks.

- Suitable for Euro, transport containers and PCB magazines
- Galvanized metal construction
- Special sizes on request
- 2 swivel and 2 fixed castors, solid rubber, black or grey (non-marking), Ø 100 mm, smooth rolling, load capacity 150 – 200 kg, conductive
- Trolley non-marking/ELS version: wheel body made of polypropylene, equipped with thermoplastic, non-marking rubber tread, electrically conductive



dpvlink 8172 (Type 120) | **dpvlink 18035** (Type 120)

All sizes can be found at dpv-elektronik.com. Simply enter the number of the green **dpvlink** in the search box.



ESD Transport Trolleys

Type 200

- Suitable for Euro containers 600 x 400 mm and 400 x 300 mm
- Galvanized metal bracket construction
- Adjustable/tiltable
- ESD swivel castors, conductive, Ø 75 mm, smooth rolling (2x with locks)
- Load capacity up to 150 kg
- Trolley non-marking/ELS: wheel body made of polypropylene, equipped with thermoplastic, non-marking rubber tread

Article numbers:



5391.207 height 710 mm 5391.206 height 630 mm 5391.205 height 510 mm 5391.210 height 135 mm



dpvlink 1909

For more information, see dpv-elektronik.com. Simply enter the number of the green **dpvlink** in the search box.



ESD Transport Trolleys

Type 500 ABS / Type 600 ABS

This EPAmove[®] transport trolley is specially designed for Euro containers measuring 600 x 400 mm and 400 x 300 mm and complies with the ESD standard DIN EN 61340-5-1. The trolley consists of a very stable, conductive ABS plastic frame in black and is equipped with four ESD-compliant swivel castors that can carry a maximum payload of 200 to 250 kg, depending on the model. The castors have a diameter of 75 to 100 mm and are made of conductive thermoplastic, which makes them particularly non-marking and maintenance-free.

This product is ideal for the safe and efficient transport of sensitive goods in ESD-sensitive environments.

Type 500 ABS includes the outer edges of the container



Type 600 ABS includes the container stacking edges



- First-class, maintenance-free wheel equipment (series 600)
- Very durable plastic frame
- Thermoplastic wheels

ESD transport trolley for standard Euro containers 600 x 400 mm/400 x 300 mm

Type	Art. no.	External dimensions	Frame internal dimensions	4 swivel castors	Castors addition	Wheel diameter	Pay load
 Type 500 ABS Type 501 ABS Type 510 ABS Type 511 ABS dpvlink 6790	5391.500	620 x 420 x 140 mm	605 x 405 x 20 mm	✓	non-marking	75 mm	200 kg
	5391.501			non-marking, 2x locks			
	5391.510	620 x 420 x 175 mm		✓	non-marking	100 mm	250 kg
	5391.511			non-marking, 2x locks			
 Type 600 ABS Type 601 ABS Type 610 ABS Type 611 ABS dpvlink 17478	5391.600	581 x 381 x 131 mm	572 x 372 x 20 mm	✓	-	75 mm	200 kg
	5391.601			2x locks			
	5391.610	581 x 379 x 158 mm		✓	-	100 mm	
	5391.611			2x locks			

dpvlink 6790 (Type 500) | **dpvlink 17478** (Type 600)

For more information, see dpv-elektronik.com. Simply enter the number of the green **dpvlink** in the search box.

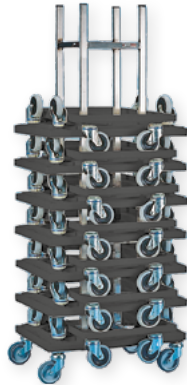


Accessories

Our ESD transport trolley accessories include various components and accessories that have been specially developed for use in ESD-protected areas. It is important that the accessory complies with ESD protection requirements and is certified accordingly to ensure the safety of sensitive electronic parts and components during transport.

Stacking trolleys ESD (up to 15 transport trolleys)

Article:
5391.536 (for Type 500)
dpvlink 6790
5391.636 (for Type 600)
dpvlink 17478



Pull rods (galvanized)

Article:
For Type 101: 5390.100.ZS1
dpvlink 18028
For Type 500/600: 5391.535.ZS5
dpvlink 6790



Configurator for Transport Trolley Coverings

Configure your slip-resistant ESD coverings. In order to dissipate electrostatic charges, the coverings must be equipped accordingly – for this purpose, the coverings are connected in accordance with ESD requirements by means of a push button.



To the configurator for cuts and coverings

Scan the QR code and use our online configurator to create your desired covering conveniently.



ESD Shelf trolleys




The robust and durable DPV shelf trolleys of the EPAmove[®] series fit perfectly into any production. Height-adjustable shelves and tiltable shelves make it possible to adapt to many applications at any time. The DPV shelf trolleys are available in various dimensions and heights.

In compliance with the ESD standard DIN EN 61340-5-1



- Robust metal construction (galvanized) with 2 handles
- Robust base frame
- 4 shelves
- 4 swivel castors, 2x with locks made of black solid rubber
- ELS version with grey, non-marking ESD swivel castors
- Payload up to 250 kg
- Payload per shelf up to 80 kg
- Shelves adjustable in height (25 mm spacing) and inclination (except type 1207 and type 1208 – bottom shelf permanently installed)
- Easy self-assembly

Versions

Type	Art. no.	External dimensions (WxDxH)	Internal dimensions shelves	Internal dimensions bottom shelf	4 swivel castors	Castors addition	Shelves adjustable	Wheel diameter
 Type 1207 dpvlink 1912	5390.1207	770 x 540 x 1286 mm	610 x 405 mm	625 x 490 mm	✓	2x locks, solid rubber standard	3 (exkl. Bottom)	100 mm
	5390.1207. ELS				✓	2x locks, non-marking grey	3 (exkl. Bottom)	
 Type 1208 dpvlink 1912	5390.1208	770 x 540 x 1750 mm	610 x 405 mm	625 x 490 mm	✓	2x locks, solid rubber standard	3 (exkl. Bottom)	
	5390.1208. ELS				✓	2x locks, non-marking grey	3 (exkl. Bottom)	
 Type 1213 dpvlink 8194	5390.1213	990 x 660 x 1310 mm	830 x 610 mm	830 x 610 mm	✓	2x locks, solid rubber standard	4	125 mm
	5390.1213. ELS				✓	2x locks, non-marking grey	4	
 Type 1214 dpvlink 8194	5390.1214	990 x 660 x 1780 mm	830 x 610 mm	830 x 610 mm	✓	2x locks, solid rubber standard	4	
	5390.1214. ELS				✓	2x locks, non-marking grey	4	
 Type 1217 dpvlink 9193	5390.1217	1150 x 570 x 1310 mm	990 x 430 mm	990 x 520 mm	✓	2x locks, solid rubber standard	4	
	5390.1217. ELS				✓	2x locks, non-marking grey	4	
 Type 1218 dpvlink 9193	5390.1218	1150 x 570 x 1780 mm	990 x 430 mm	990 x 520 mm	✓	2x locks, solid rubber standard	4	
	5390.1218. ELS				✓	2x locks, non-marking grey	4	

Your System Supplier
for Electronics Manufacturing



DPV Elektronik-Service GmbH
Herregrundstr. 1
75031 Eppingen, Germany

Phone: +49 (0)7262 9163-0
E-Mail: sales@dpv-elektronik.de
Internet: www.dpv-elektronik.de

Your Contact:

EUROPE | INTERNATIONAL

DPV Elektronik-Service GmbH

Phone: +49 (0)7262 9163-200
E-Mail: export@dpv-elektronik.de

SWITZERLAND | LIECHTENSTEIN

Compumet AG

Theodorshofweg 22
4310 Rheinfelden, Switzerland

Phone: +41 (0)61 836 10 50
E-Mail: info@compumet.ch
Internet: www.compumet.ch



Visit us on LinkedIn
linkedin.com/company/dpv-elektronik